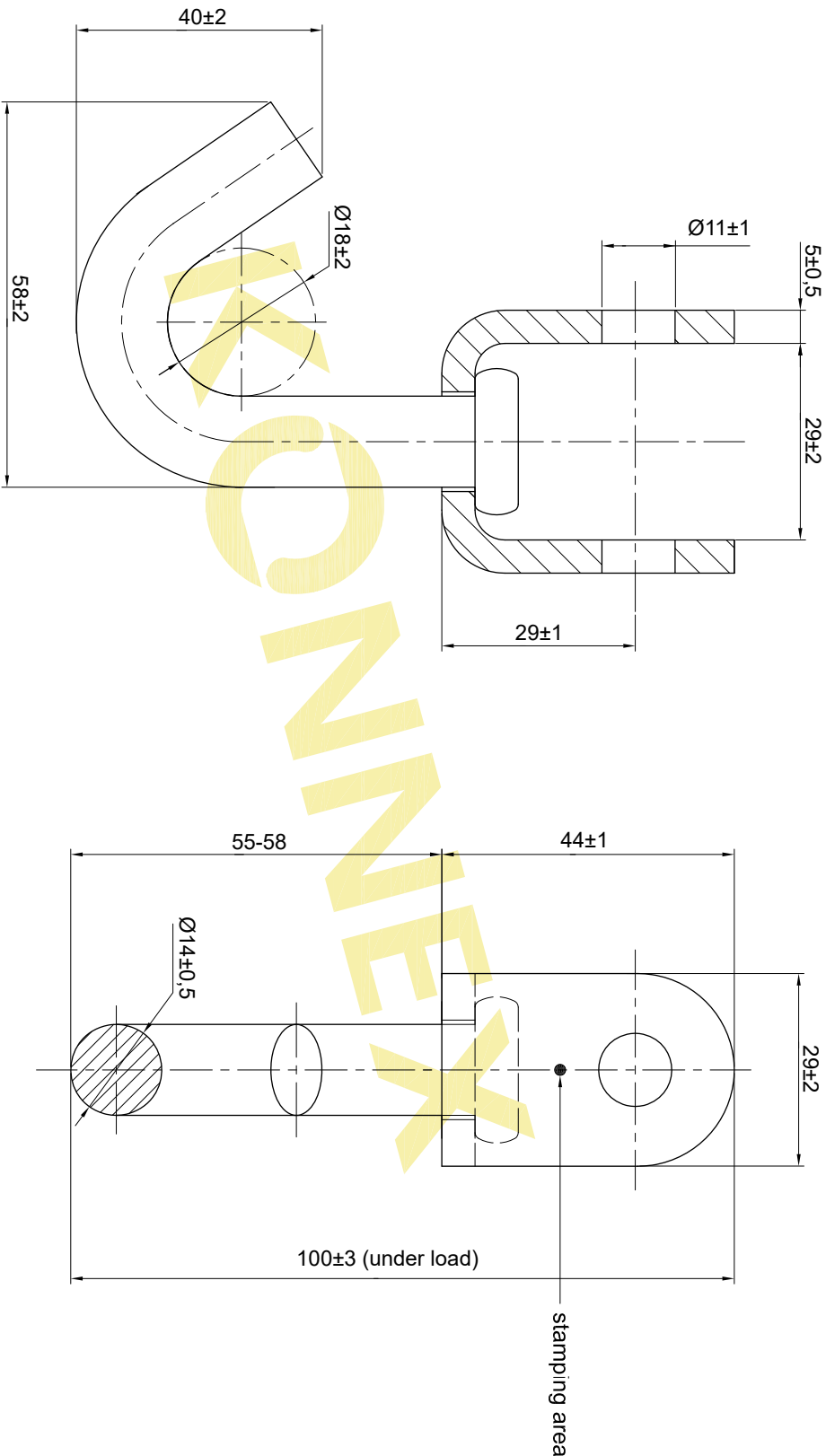


Stamping:

Logo LC 15 KN SC/M/Y/Y

1. "Logo" ○
2. "LC" load capacity
3. "SC" Supplier code
4. "M" Month code
 - A - January
 - B - February
 - C - March
 - D - April
 - E - May
 - F - June
 - G - July
 - H - August
 - I - September
 - K - October
 - L - November
 - M - December
5. "YY" Year code



Technical requirements:

1. Breaking strength (BS): 30 kN
2. No cracking pitting rust spot and scratch
3. Tested according: EN ISO 9227 NSS
4. Tested according: DIN EN 12195-2

Product Code: 72BQ009		Surface Requirement: Zinc plating		Tolerance: ---		Projection:		Scale: ---		Weight: ---g	
ECN: ---		Date: ---		Name: ---		Original Drawing: ---		Replaces: ---		Replaced by: ---	
Content of Change		Date		Name		Original Drawing		Replaces		Replaced by	
Design		2015.04.08		Name		Date		Drawing No.		Page	
Check				Name		Date		72BQ009		1	
Approve				Name		Date		Wirbelhaken 35mm - 30kN		Rev	
				Name		Date		Swivel J-Hook 35mm - 30kN		Format	
				Name		Date		KONNEX		A4	